

2023 ACADEMIC YEAR

PROSPECTIVE STUDENT GUIDE

THE **U** OF YOU





4	CITY OF SLC
7	STUDENT LIFE
8	HOUSING
10	FRESHMAN ADMISSIONS
11	FRESHMAN APPLICATION PROCESS
12	TRANSFER ADMISSIONS
13	TRANSFER APPLICATION PROCESS
15	SCHOLARSHIPS AND FINANCIAL AID
16	TUITION AND FEES
17	FUNDING OPTIONS
18	MAJORS AND DEGREES
20	IMPORTANT DATES
23	CONNECT WITH US

TOP 10 GAME DESIGN PROGRAM

PRINCETON REVIEW 2022



WELCOME TO THE UNIVERSITY OF UTAH.

WELCOME TO THE **U** OF YOU.

This is where it all begins. This is where the transformation begins. Where ideas are born and dreams take shape. You've worked hard to get to this point in your life. And it's time for all of your ambition and passion to show the world how it's done.

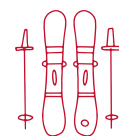
The University of Utah is here to inspire and support you every step of the way. We provide the landscape, but the journey is all about you.

YOU ARE GOING TO LOVE IT HERE.

Just minutes from campus, Salt Lake City is a place of amazing energy, culture, and excitement. Check out professional sporting events, arts festivals, world-class shopping, and Broadway theatre acts. City bus routes and a light rail system weave through campus so it's easy to connect and students ride free with their student Ucard.

Salt Lake City and the Wasatch Front are home to industry-leading tech companies like Adobe, Ebay, Overstock.com, IM Flash Technologies, Ancestry.com, and Qualtrics.

You might even find your dream job here after graduation because Salt Lake City is a place of great opportunity. And mountains. And nightlife. And 222 days of sunshine. And the great outdoors. And the greatest snow on earth. And we could go on and on!



**7 WORLD-CLASS SKI RESORTS WITHIN
30 MINUTES OF SALT LAKE CITY**



**OVER 100 MILES OF HIKING AND BIKING
TRAILS FOR ALL SKILL LEVELS**



**SALT LAKE CITY RANKS IN TOP 25
BEST PLACES TO LIVE IN 2022-2023**

U.S. News



UTAH RANKED #3 STATE FOR BUSINESS

CNBC July 2021



TOP 25 CITY FOR OUTDOOR ACTIVITIES IN AMERICA

NICHE 2022





THE **U** OF MAKING CONNECTIONS.

The University of Utah has all sorts of ways for you to find your community. From your residence hall to your classrooms to over 600 student groups, you'll find this is a campus made for making lifelong friends. So go ahead, introduce yourself, try new things, jump right in and you'll see how amazing these years can be.

THE MUSS IS A MUST. ←

Cheer with 5,000 of your fellow students in the Mighty Utah Student Section (MUSS)! The MUSS has been named the 2021 student section of the year by ESPN.

600+ STUDENT GROUPS ← on the University of Utah campus.

TOP-10 U BUCKET LIST ←

1. Learn the fight song
2. Hike the Block U
3. Join a student organization
4. Attend a Pac-12 sporting event
5. Volunteer with the Bennion Center
6. Climb a 54-ft wall at The Summit Climbing Facility
7. Watch a "Dive-in Movie" at the Student Life Center
8. Attend the on-campus Crimson Nights dance party and Redfest Music Festival
9. See a Utah Presents production for free with your Arts Pass at Kingsbury Hall
10. Snap graduation pics at the Block U on campus



A PLACE JUST FOR YOU.

LIVING ON CAMPUS

Freshman students can select single, double or triple room types from a wide variety of on-campus residence halls. All housing options come furnished and include all utilities, wired and wireless internet, and free on-site laundry. View 3-D floorplans, housing details, and photos online at housing.utah.edu.

LIVING LEARNING (LLC) & THEME COMMUNITIES (TC)

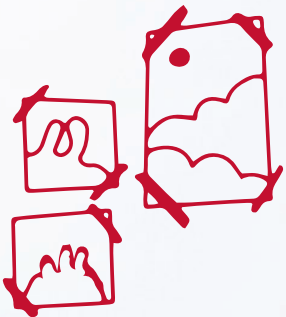
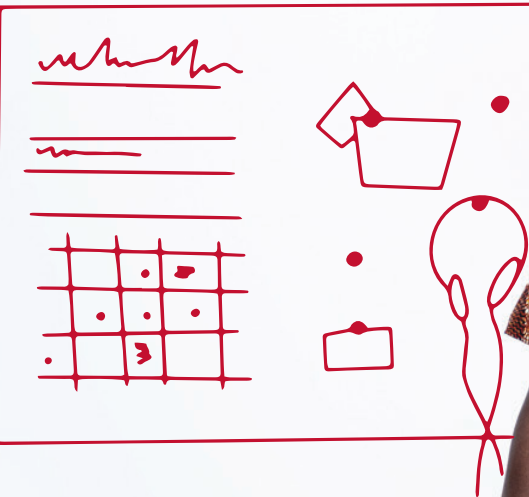
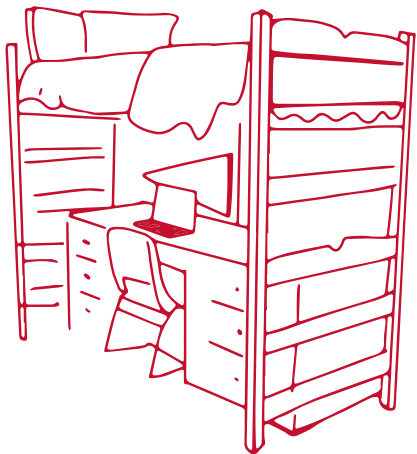
These unique housing options offer students the opportunity to live and engage with other students who share similar interests, majors, or goals. LLC and TC students participate in a variety of activities associated with their community.

Students living on campus have access to a variety of resident resources, academic support, and dining options in the Peterson Heritage Center, Marriott Honors Community, Lassonde Studios, and Kahlert Village.

LASSONDE STUDIOS

This unique and gorgeous facility is part residence hall, part incubator of ideas. Here, students live and work shoulder-to-shoulder to get ideas off the ground and out into the world. Part of the David Eccles School of Business, but open to any student on campus, the Lassonde Entrepreneur Institute is recognized as a Top 10 Undergraduate Entrepreneurship Program by US News & World Report.

4,500 STUDENTS LIVE ON CAMPUS



FRESHMAN ADMISSIONS

Please visit admissions.utah.edu/apply for detailed information about applying to the U.

TEST OPTIONAL FOR 2023 FRESHMAN APPLICANTS

The University of Utah is Test Optional for fall 2023 freshman applicants who attended a regionally accredited high school. ACT/SAT scores are not required for admission, merit scholarships (including department scholarships), or direct admission programs (including Engineering). However, homeschooled students and GED holders are required to provide ACT/SAT test scores. Freshman applications to the University of Utah will be evaluated using a holistic review process that considers a student’s high school GPA, course rigor, etc. To find out more, visit admissions.utah.edu/test_optional.

FRESHMAN ADMISSIONS EVALUATION PROCESS

We evaluate applicants through a holistic review process, which helps ensure all students get the best opportunity to present a complete picture of their qualifications. Our holistic review includes consideration of the following:

ACADEMIC PREPARATION & PERFORMANCE (PRIMARY FACTORS)

- Rigorous course selection throughout high school career (i.e. Honors, AP, IB, and Dual/Concurrent Enrollment courses)
- Grade trends
- Cumulative unweighted GPA
- Excellence in academic achievement, intellectual pursuits, and creative endeavors
- Satisfactory completion of all high school core course requirements

PERSONAL ACHIEVEMENTS, CHARACTERISTICS, AND TEST SCORES (SECONDARY FACTORS)

- Awards and distinctions
- Involvement in clubs and organizations, athletics, extracurricular activities, or work
- Family responsibilities
- Extraordinary circumstances
- Significant commitment to community engagement, citizenship, and leadership
- Ability to contribute to and benefit from a culturally and intellectually diverse learning community
- ACT/SAT test scores (for students who want their scores considered as part of their application)

FRESHMAN APPLICATION PROCESS

1. **Apply.** Visit admissions.utah.edu/apply. Only complete applications will be considered for admission. All required application documentation (application, fees, transcripts, and ACT/SAT test scores if you are submitting) must be received by the stated application deadlines. Refer to page 20 for Application deadlines.
2. **Indicate Your ACT/SAT Test Optional Choice on Your Application.** If you chose to have your ACT/SAT test scores considered for admission, your scores must be sent electronically by the testing agency. Request your scores using test code 4274 for the ACT, and 4853 for the SAT.
3. **Submit the Application Fee.** The \$55 application fee is nonrefundable.*
4. **Submit High School Transcripts.** Official high school and/or university transcripts must be sent to the Office of Admissions directly from all schools a student has attended. We accept electronic transcripts from Parchment, National Student Clearinghouse, Credentials Solutions, eScrip-Safe, and Scoir.

5. **Track Your Application Status Online.** Track your application at admission-checklist.app.utah.edu. All required application items must be completed by the stated dates and deadlines to be considered for admission. See admissions.utah.edu/apply/freshmen-students/ for details. Official admissions decisions will be mailed.

ADMISSIONS COUNSELORS

Our admissions counselors are your personal representatives who will guide you and answer any questions you may have about admissions, opportunities at the U and the next steps you need to complete. Visit admissions.utah.edu/meet-your-counselors to find your counselor.

**Application Fee will be waived for first-time freshman with a permanent address in the state of Utah or if you attend(ed) a tribal high school located in Utah.*



TRANSFER ADMISSIONS

Please visit admissions.utah.edu/apply/transfer for detailed information about applying to the U as a transfer student.

TRANSFER ADMISSION EVALUATION PROCESS

Our holistic evaluation process assesses student preparedness and academic potential in the context of each applicant's personal experience.

Transfer applicants will be considered for admission based on the following requirements:

- Previous graduation from an accredited high school or the equivalent (e.g. GED)
- The average GPA of admitted transfer students is a 3.4. Applicants are reviewed holistically with attention paid to grade trends, responsibilities and involvement outside of school, and academic goals.
- Applicants with fewer than 30 semester hours at application are required to submit an official high school transcript. Those who were homeschooled, attended an unaccredited high school, or have a GED are required to submit ACT/SAT test scores

TRANSFER APPLICATION PROCESS

1. **Apply.** Visit admissions.utah.edu/apply/transfer for transfer admissions guidelines, explanation of the admissions process, deadlines, and to access the application. Only complete applications will be considered for admission. All required application documentation (application, fees, transcripts, and ACT/SAT test scores if you are submitting) must be received by the stated application deadlines.
2. **Submit the Application Fee.** The \$55 application fee is nonrefundable.
3. **Submit Transcripts.** Official university transcripts must be sent to the Office of Admissions directly from all universities a student has attended. We also accept electronic transcripts from Parchment, National Student Clearinghouse, Credentials Solutions, eScrip-Safe, and Scoir.
4. **Track Your Status Online.** Track your application at admissions.utah.edu/track. Official admissions decisions will be mailed.

ADMISSIONS COUNSELORS

For a smooth transition to the U, we recommend meeting with a Transfer Program advisor before applying for admission.

Our admissions counselors are your personal representatives who will guide you and answer any questions you may have about admissions, opportunities at the U and the next steps you need to complete. Visit admissions.utah.edu/meet-your-counselors to find your counselor.



SCHOLARSHIPS AND FINANCIAL AID

RESEARCH YOUR FINANCIAL AID OPTIONS!

Review available scholarships and funding options, view helpful checklists and guides, and see specific requirements for different scholarships at financialaid.utah.edu.

Our Scholarships and Financial Aid office is dedicated to helping make college affordable.

The University of Utah offers a full range of scholarships, grants, work-study, and loans. Scholarships are based on merit, financial need, and other award factors.

To be considered for university Merit Scholarship Awards, apply by the following dates:

➔ **December 1: Early Action Admissions Application deadline.** Students applying for admission to the university by December 1 are automatically considered for university merit scholarship awards.

➔ **February 1: Financial Aid Priority deadline.** For maximum financial aid consideration, complete and submit the Free Application for Federal Student Aid (FAFSA) by 2/1. Use school code 003675.

LOWEST IN-STATE TUITION
AMONG ITS
PAC-12
PUBLIC PEERS

APPROXIMATELY
87% OF
STUDENTS
RECEIVE SOME FORM OF
FINANCIAL AID



TUITION AND FEES

ESTIMATED 2023-2024 TUITION AND FEES

DIRECT COSTS

Based on 24 credit hours —12 credit hours each Fall and Spring semesters and living on-campus.

Non-resident Tuition and Fees	\$30,488
Room and Board	\$12,456
Total	\$42,944

Resident Tuition and Fees	\$9,002
Room and Board	\$12,456
Total	\$21,458

2023-24 tuition and fees are estimates based upon 2021-22 costs. The Cost of Attendance is based upon estimated direct costs and indirect costs. Direct costs include tuition and fees, along with room and board if living on campus. Indirect costs include such items as books & supplies, transportation, and personal expenses. For more of a full breakdown of costs, visit bit.ly/UofUCOA.

FUNDING OPTIONS

FOR UTAH SCHOLARSHIP

The For Utah Scholarship creates a path to a University of Utah undergraduate degree. Tuition and mandatory fees will be covered by scholarships and grant funds for Pell grant eligible Utah residents. Visit admissions.utah.edu/forutah for more information.

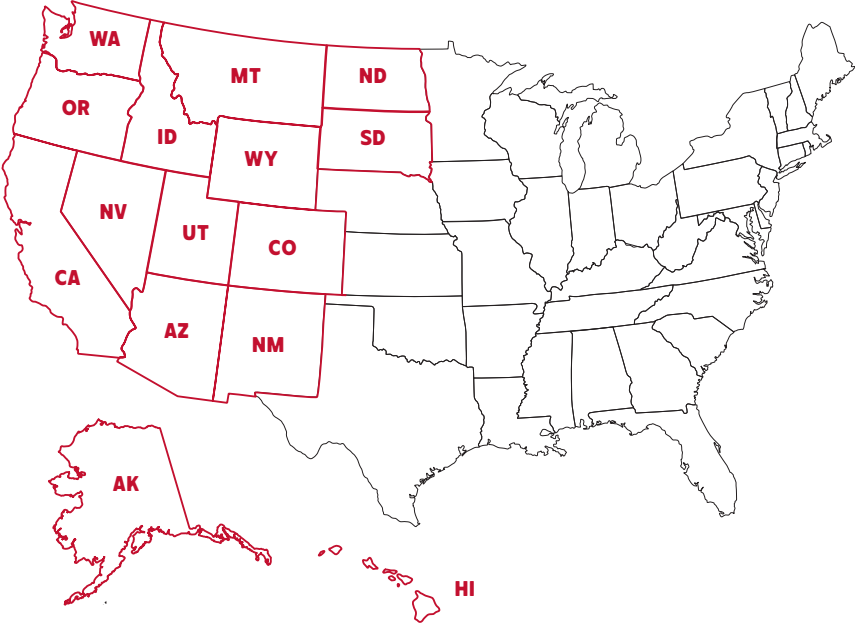
ESTABLISHING RESIDENCY FOR IN-STATE TUITION

In-state tuition rates are available to students who change their residency to the state of Utah after 12 months. For complete qualification details, please visit admissions.utah.edu/apply/residency.

WESTERN UNDERGRADUATE EXCHANGE (WUE)

TUITION DISCOUNT FALL 2023

WUE provides a tuition discount for first-time entering freshmen who are high school seniors in one of the 15 WUE designated western U.S. states noted in the map, and that have completed the admissions application by December 1, and met the minimum GPA requirement. The award will be for all four years of study at the University of Utah. For more information on the WUE program, visit financialaid.utah.edu/wue for more information.



MAJORS AND DEGREES

MAJORS			PROGRAM EMPHASIS		
PROGRAM	COLLEGE	DEGREE	PROGRAM	COLLEGE	DEGREE
Accounting.....BUS	B.A., B.S.		Child Life		
Accounting (Quantitative Analysis of Markets & Organizations).....BUS	B.S.		(Family, Community & Human Development).....SBS	B.A., B.S.	
Actor Training Program (ATP) (Theatre).....FA	BFA		Chinese.....HUM	B.A.	
Advanced Financial Analysis (Finance).....BUS	B.A., B.S.		Civil & Environmental Engineering.....EN	B.S.	
Advanced Language, Literature, and Culture (German).....HUM	B.A.		Classical Guitar Performance (Music).....FA	B.Mus.	
Aerospace Engineering (Mechanical Engineering) ..EN	B.S.		Classics.....HUM	B.A.	
Aggregates and Mineral Process (Mining Engineering).MES	B.S.		Climate Change & Landscape Dynamics (Geography).....SBS	B.A., B.S.	
Air, Water, & Health (Environmental & Sustainability Studies).....SBS	B.A. B.S.		Commercial, Community & Sport Management (Parks, Recreation, & Tourism).....HE	B.A., B.S.	
Anatomy & Physiology (Biology).....SC	B.S.		Communication.....HUM	B.A., B.S.	
Animation (Film & Media Arts).....FA	B.A.		Communication Studies (Communication).....HUM	B.A., B.S.	
Applied Mathematics.....SC	B.S.		Community Health Education (Health & Kinesiology)HE	B.S.	
Applied Physics (Physics).....SC	B.A., B.S.		Community Involvement & Nonprofit Leadership (Political Science).....SBS	B.A. B.S.	
Arabic (Middle East Studies).....HUM	B.A.		Comparative Literature (World Languages and Cultures)HUM	B.A.	
Arabic (World Languages and Cultures).....HUM	B.A.		Comprehensive Physics (Physics).....SC	B.A., B.S.	
Artificial Intelligence (Computer Science).....EN	B.S.		Computation (Mathematics).....SC	B.A., B.S.	
Anthropology.....SBS	B.A. B.S.		Computational & Informatics (Biomedical Engineering)EN	B.S.	
Archeological Science (Anthropology).....SBS	B.A. B.S.		Computational Physics and Astronomy Emphasis (Physics).....SC	B.A., B.S.	
Architectural Studies.....AP	B.S.		Computer Engineering.....EN	B.S.	
Art History.....FA	B.A.		Computer Organization (Computer Science).....EN	B.S.	
Art Teaching.....FA	BFA		Computer Science.....EN	B.S.	
Asian Studies.....HUM	B.A.		Computer Systems (Computer Science).....EN	B.S.	
Astronomy & Astrophysics (Physics).....SC	B.A. B.S.		Conservation & Land Management (Environmental & Sustainability Studies).....SBS	B.A. B.S.	
Atmospheric Sciences.....MES	B.S.		Construction Engineering.....EN	B.S.	
Atmospheric & Environmental Chemistry (Chemistry).....SC	B.S.		Criminology.....SBS	B.A., B.S.	
Ballet.....FA	BFA		Cross 3-D: Ceramics & Sculpture (Art).....FA	BFA	
Ballet Teaching (Ballet).....FA	BFA		Cultural Anthropology (Anthropology).....SBS	B.A., B.S.	
Biochemistry (Biology).....SC	B.A., B.S.		Cultural Studies (World Languages and Cultures)....HUM	B.A.	
Biochemistry.....SC	B.A., B.S.		Dance Teaching.....BFA	BFA	
Bioelectrical Engineering (Biomedical Engineering)EN	B.S.		Design.....AP	B.S.	
Biology.....SC	B.A., B.S.		Data Science.....EN	B.S.	
Biological Chemistry (Chemistry).....SC	B.A., B.S.		Deaf & Hard of Hearing (Special Education).....ED	B.S.	
Biology Teaching.....SC	B.A., B.S.		Design & Manufacturing (Mechanical Engineering) EN	B.S.	
Biomaterials Engineering (Biomedical Engineering).EN	B.S.		Design, Regulatory, & Entrepreneurship (Biomedical Engineering).....EN	B.S.	
Biomechanical Engineering (Biomedical Engineering).....EN	B.S.		Dynamics & Control (Mechanical Engineering).....EN	B.S.	
Biomedical Engineering.....EN	B.S.		Early Childhood Education (Family, Community & Human Development).....SBS	B.A., B.S.	
Biomedical Devices & Sensors (Metallurgical Engineering).....MES	B.S.		Early Childhood Special Education (Special Education).....ED	B.S.	
Biomedical Imaging (Biomedical Engineering).....EN	B.S.		Earth Science Composite Teaching.....MES	B.S.	
Biomedical Physics (Physics).....SC	B.A., B.S.		Ecojustice Education (Environmental & Sustainability Studies).....SBS	B.A., B.S.	
Business Administration.....BUS	B.A., B.S.		Ecology, Evolution, and Environment (Biology).....SC	B.A., B.S.	
Business Chemistry (Chemistry).....SC	B.A., B.S.		Economics.....SBS	B.A., B.S.	
Business Economics & Analytics (Economics).....SBS	B.A. B.S.		Educational Psychology.....ED	B.A., B.S.	
CAD for Digital Systems (Computer Science).....EN	B.S.		Electrical Engineering.....EN	B.S.	
Cell & Molecular Biology (Biology).....SC	B.A., B.S.		Elementary Education.....ED	B.A., B.S.	
Ceramics (Art).....FA	BFA		Embedded Systems (Computer Science).....EN	B.S.	
Chemical Engineering.....EN	B.S.		Emergency Medical Services (Health & Kinesiology)HE	B.S.	
Chemical Engineering (Chemistry).....SC	B.A., B.S.		Energy Engineering (Chemical Engineering).....EN	B.S.	
Chemical Physics (Chemistry).....SC	B.A., B.S.		Engineering.....EN	B.S.	
Chemical Processing (Metallurgical Engineering).MES	B.S.				
Chemistry.....SC	B.A., B.S.				
Chemistry Teaching.....SC	B.A., B.S.				

Visit curriculum.utah.edu/degrees for more information.

PROGRAM	COLLEGE	DEGREE	PROGRAM	COLLEGE	DEGREE
Instrumental Performance (Music).....FA	B.Mus.		Persian (Middle East Studies).....HUM	B.A.	
International Politics (Political Science).....SBS	B.A., B.S.		Persian (World Languages and Cultures).....HUM	B.A.	
International Studies.....HUM	B.A., B.S.		Pharmacy.....PH	Pharm.D.	
Italian (World Languages and Cultures).....HUM	B.A.		Philosophy.....HUM	B.A., B.S.	
Japanese.....HUM	B.A.		Philosophy of Science.....HUM	B.A., B.S.	
Jazz Composition (Music).....FA	B.Mus.		Photography/Digital Imaging (Art).....FA	BFA	
Jazz Performance (Music).....FA	B.Mus.		Physical Metallurgy (Metallurgical Engineering)...MES	B.S.	
Journalism (Communication).....HUM	B.A., B.S.		Physics.....SC	B.A., B.S.	
Kinesiology Teaching (Health & Kinesiology).....HE	B.S.		Physics Teaching.....SC	B.A., B.S.	
Korean (World Languages and Cultures).....HUM	B.A.		Piano Pedagogy (Music).....FA	B.Mus.	
Latin (Classics).....HUM	B.A.		Piano Performance (Music).....FA	B.Mus.	
Latin American Studies.....HUM	B.A.		Plant Biology (Biology).....SC	B.A., B.S.	
Law & Politics (Political Science).....SBS	B.A., B.S.		Political Science.....SBS	B.A., B.S.	
Linguistics.....HUM	B.A.		Population, Development, & Sustainability (Geography).....SBS	B.A. B.S.	
Management.....BUS	B.A., B.S.		Portugese (World Languages and Cultures).....HUM	B.A.	
Marketing.....BUS	B.A., B.S.		Power, Energy, & Control (Electrical & Computer Engineering).....EN	B.S.	
Materials Science & Engineering.....EN	B.S.		Premedical (Biomedical Engineering).....EN	B.S.	
Materials Science & Engineering Chemistry (Chemistry).....SC	B.A., B.S.		Printmaking (Art).....FA	BFA	
Mathematics.....SC	B.A., B.S.		Professional Chemistry (Chemistry).....SC	B.A. B.S.	
Mathematics of Computation (Mathematics).....SC	B.A., B.S.		Professional Meteorology (Atmospheric Science).MES	B.S.	
Mathematics Chemistry (Chemistry).....SC	B.A., B.S.		Programming Languages (Computer Science).....EN	B.S.	
Mathematics Teaching.....SC	B.A., B.S.		Psychology.....SBS	B.A., B.S.	
Mechanical Engineering.....EN	B.S.		Public Policy (Political Science).....SBS	B.A., B.S.	
Mechatronics (Mechanical Engineering).....EN	B.S.		Quantitative Analysis of Markets & OrganizationsBUS	B.S.	
Medical Laboratory Science.....MED	B.S.		Recreational Therapy.....HE	B.A., B.S.	
Metallurgical Engineering.....MES	B.S.		Religious Studies.....HUM	B.A.	
Micro/Nanoscale Engineering (Mechanical Engineering).....EN	B.S.		Remote Sensing of the Environment (Geography)SBS	B.A., B.S.	
Microbiology (Biology).....SC	B.A., B.S.		Robotics (Computer Science).....EN	B.S.	
Middle East Studies.....HUM	B.A.		Robitics & Control (Mechanical Engineering).....EN	B.S.	
Mild/Moderate Disabilities (Special Education).....ED	B.S.		Russian.....HUM	B.A.	
Mineral/Particle Processing (Metallurgical Engineering).....MES	B.S.		Science, Health, Environmental and Risk Communication (Communication).....HUM	B.A., B.S.	
Mining Engineering.....MES	B.S.		Sculpture/Intermedia (Art).....FA	BFA	
Modern Dance.....FA	BFA		Severe Disabilities (Special Education).....ED	B.S.	
Music.....FA	B.A., B.Mus.		Snow and Water Sciences (Atmospheric Science).MES	B.S.	
Music Composition (Music).....FA	B.Mus.		Social Work.....SW	BSW	
Music Education: Choral (Music).....FA	B.Mus.		Society and Culture (German).....HUM	B.A.	
Music Education: Instrumental (Music).....FA	B.Mus.		Sociology.....SBS	B.A., B.S.	
Music History & Literature (Music).....FA	B.Mus.		Software Development (Computer Science).....EN	B.S.	
Music Theory (Music).....FA	B.Mus.		Solid Mechanics (Mechanical Engineering).....EN	B.S.	
Musical Theatre Program (MTP) (Theatre).....FA	BFA		Spanish.....HUM	B.A.	
Neurobiology (Biology).....SC	B.A., B.S.		Spanish Teaching.....HUM	B.A.	
Nuclear (Metallurgical Engineering).....MES	B.S.		Special Education.....ED	B.S.	
Nuclear Medicine Technology (Health and Kinesiology).....HE	B.S.		Speech & Hearing Science.....HE	B.A., B.S.	
Nursing.....NU	B.S.		Stage Management (Theatre).....FA	BFA	
Operations & Supply Chain.....BUS	B.S.		Statistical Analysis (Economics).....SBS	B.A., B.S.	
Operations Management (Mining Engineering)....MES	B.S.		Statistics (Mathematics).....SC	B.A., B.S.	
Organ Performance (Music).....FA	B.Mus.		Strategic Communication (Communication).....HUM	B.A., B.S.	
Outdoor Recreation Studies (Parks, Recreation & Tourism).....HE	B.A., B.S.		Sustainable Energy Engineering (Mechanical Engineering).....EN	B.S.	
Painting & Drawing (Art).....FA	BFA		Sustainability Initiatives (Environmental & Sustainability Studies).....SBS	B.S.	
Parks, Recreation, & Tourism.....HE	B.A., B.S.		Sustainable Resource Development (Mining Engineering).....MES	B.S.	
Peace & Conflict Studies.....HUM	B.A., B.S.		Sustainable Tourism Hospitality Management		
Performing Arts Design Program (PADP) (Theatre)FA	BFA				

COLLEGE ABBREVIATIONS

Architecture + Planning.....AP
Cultural & Social Transformation.....CST
David Eccles School of Business.....BUS
Education.....ED
Engineering.....EN
Fine Arts.....FA
Health.....HE
Humanities.....HUM
School of Medicine.....MED
Mines & Earth Sciences.....MES
Nursing.....NU
Pharmacy.....PH
Science.....SC
Social & Behavioral Science.....SBS
Social Work.....SW
Undergraduate Studies.....US

**The College of Mines and Earth Sciences and the College of Science will merge beginning July 1, 2022.*

DEGREE ABBREVIATIONS

Bachelor of Arts.....B.A.
Bachelor of Science.....B.S.
Bachelor of Fine Arts.....BFA
Bachelor of Music.....B.Mus.
Bachelor of Social Work.....BSW
Pharmacy Degree.....Pharm.D.

To design your own degree visit ugs.utah.edu/bus

Most undergraduate applicants are admitted as pre-majors to the university. Additional requirements may be needed in order to formally join a major. Students applying to Engineering or Architecture + Planning may be considered for direct admission to the respective program. Admission to the university does not guarantee admission to an undergraduate major and acceptance into a program or undergraduate major does not guarantee admission to the university.

Pre-Dental, Pre-Law, Pre-Med, Pre-Optometry, and Pre-Veterinarian are not majors. Students interested in these fields will need to choose a major and schedule preprofessional advising with the applicable college.

IMPORTANT DATES FOR APPLYING

For more information, please visit admissions.utah.edu.
All completed applications received by **December 1, 2022** will be automatically considered for Merit Scholarships.

FRESHMAN ADMISSIONS

SUMMER 2023 AND FALL 2023 ADMISSIONS APPLICATION DEADLINES

December 1: Fall 2023 Early Action & Merit Scholarship Consideration Deadline
April 1: Summer 2023 Session One Application Deadline
April 1: Fall 2023 Final Application Deadline
June 1: Summer 2023 Session Two Application Deadline

**Students who apply for Fall 2023 or Summer 2023 Admissions by the December 1st Early Action deadline will be notified of their decision in January*
**Students who apply for Fall 2023 or Summer 2023 Admissions after December 1st will be notified of their decision on a rolling basis, beginning in early February*
**Students who apply for Fall 2023 or Summer 2023 Admissions by the December 1st Merit Scholarship Consideration Deadline will be notified about any scholarship received mid-February*
**Applications will be considered after April 1st on a space available basis*

SPRING 2023 ADMISSIONS APPLICATION DEADLINES

November 1: Spring 2023 Application Deadline

**Applicants for Spring 2023 will receive their decisions on a rolling basis*

FINANCIAL AID DEADLINES FOR FRESHMAN APPLICANTS

February 1: Financial Aid Priority Date

**For maximum consideration, be sure the Free Application for Federal Student Aid (FAFSA) is submitted by this date.*
**All dates are subject to change without notice.*

TRANSFER ADMISSIONS

November 1: Spring 2023 Admissions Deadline
February 1: Fall 2023 Priority Admissions Application Date & Merit Scholarships Consideration Deadline
April 1: Summer 2023 Session One Application Deadline
April 1: Fall 2023 Final Application Deadline
June 1: Summer 2023 Session Two Application Deadline

**Students who apply by any of the transfer admissions deadlines will be notified of their decision on a rolling basis*

FINANCIAL AID DEADLINES FOR TRANSFER APPLICANTS

Transfer students applying for Fall 2023 admission should submit their FAFSA by no later than February 1, 2023.

Transfer students applying for Spring 2023 or Summer 2023 admission should file the 2022-23 FAFSA as soon as possible, and note that the 2023-24 FAFSA needs to be filed by February 1, 2023 for the Fall 2023 semester.





CONNECT WITH US!

SCHEDULE A CAMPUS TOUR


Our daily campus tours show you what it means to be a member of the U community. Meet with current students and explore Utah's only tier-one research institution. Visit our residence halls and see where you will live, eat, and study on campus. Visit admissions.utah.edu/visit for more information.

CONNECT WITH YOUR COUNSELOR


Schedule a time to meet with an Admissions Counselor by visiting admissions.utah.edu/meet-your-counselors

CONNECT WITH ADMISSIONS

admissions.utah.edu | 801.581.8761 | toll-free: 800.685.8856

 @uofuadmissions

 @uutah

 @utahadmissions

 Facebook.com/utahadmissions

The University of Utah is an Equal Opportunity and Affirmative Action institution committed to diversity, inclusion, and compliance with all non-discrimination and disability laws. For information about the University's nondiscrimination and accommodation policies, including contact information for the Title IX Coordinator, please see: utah.edu/nondiscrimination. To request this publication in an alternate format, please call 801-581-8365.

The Federal Higher Education Act of 1965, as amended, requires that institutions of higher education disclose certain consumer information to prospective students. To find a net price calculator, drug and alcohol abuse prevention information, campus safety, graduation rates and more, visit financialaid.utah.edu/u-right-to-know.



The University of Utah
Office of Admissions
201 South 1460 East, Room 250 S
Salt Lake City, Utah 84112



801.581.8761 | 800.685.8856
admissions@utah.edu